

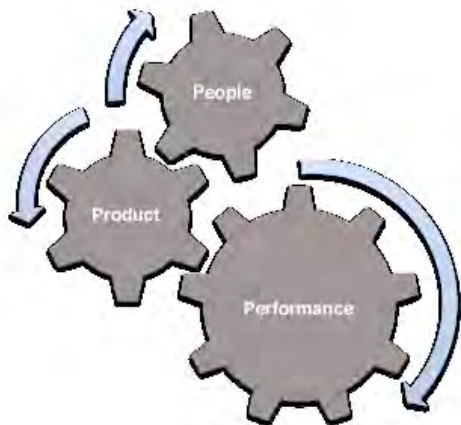


SERVICE MANUAL

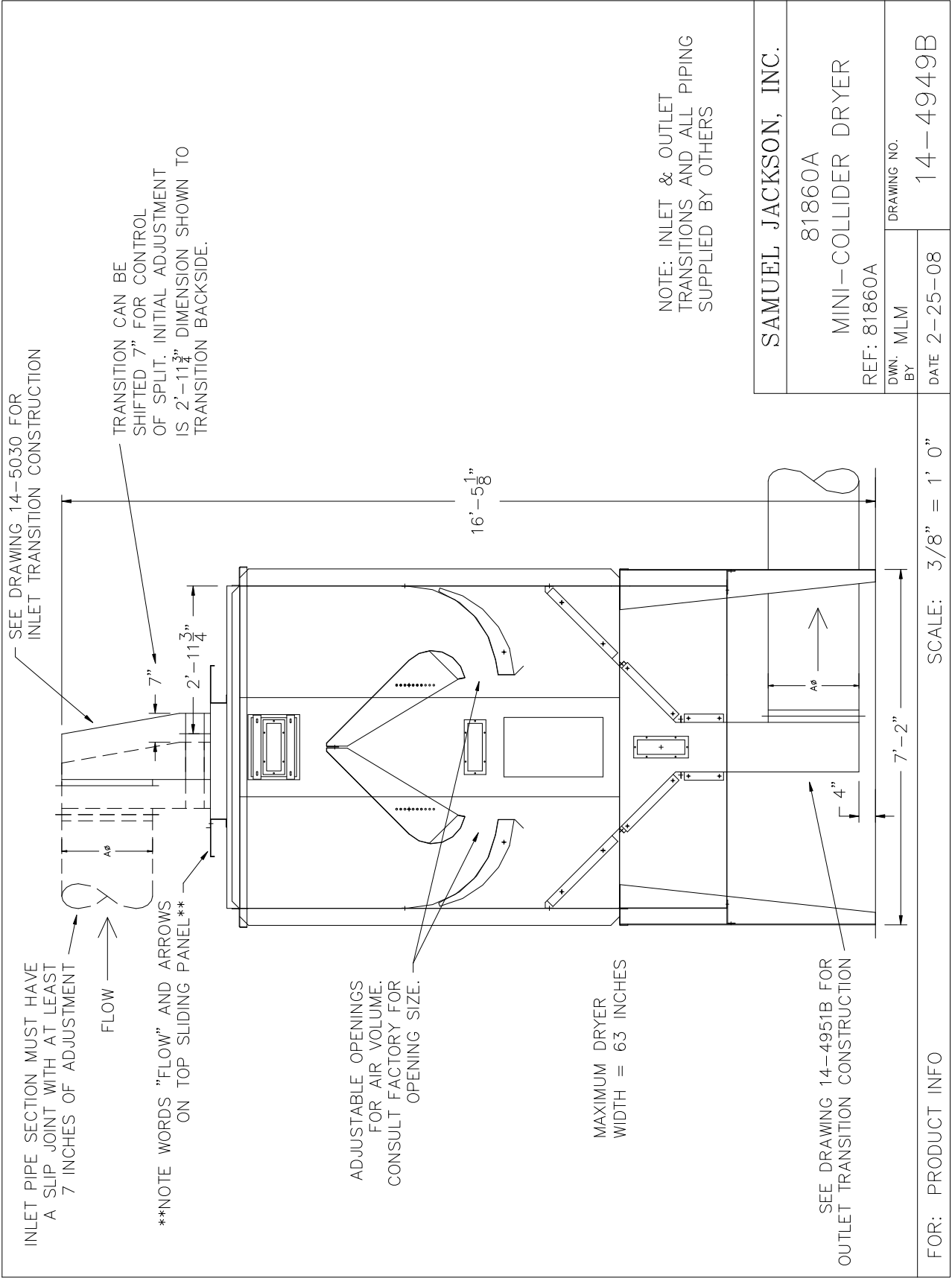
Assembly Directions

81860A

Mini-Collider Dryer



SAMUEL JACKSON

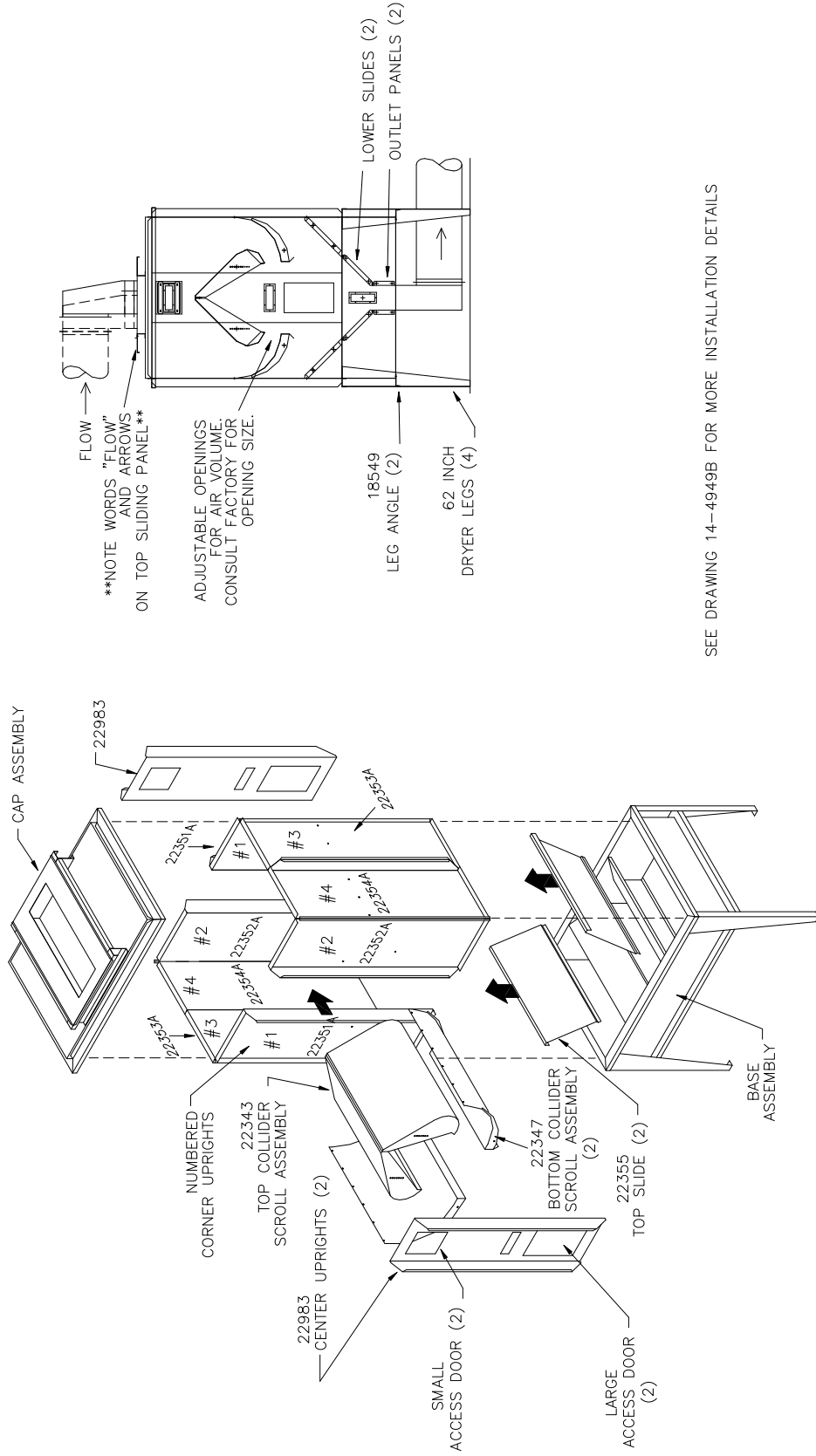


ASSEMBLY INSTRUCTIONS FOR THE 81860A MINI-COLLIDER DRYER

- 1) Please refer to Drawings CAT5373B *81860A MINI-COLLIDER DRYER ASSEMBLY* and 14-4949B *MINI-COLLIDER DRYER* during the assembly.
- 2) Assemble the four legs to the base of the Mini-Collider Dryer using the 3/8 x 1" bolts (do not tighten). Next install the two 18549 Leg Angles using the same 3/8 x 1" bolts to help stabilize the legs. Install the Lower Slides and Outlet Panels into the base using the 5/16 X 3/4 bolts. Once all the bolts are in place, tighten all the bolts for the legs to the base.
- 3) Assemble Corner Uprights 1 & 3, 2 & 4, together using the 5/16 X 3/4 bolts. Identifying numbers are located on the bottom edge of each upright.
- 4) Using the 5/16 X 3/4 bolts assemble corners to base leaving nuts locked on bolts but not tightened. Bolt both sets of corner uprights 3 & 4 together, again leaving the fasteners loose.
- 5) Insert the Bottom Collider Scroll Assemblies into the Dryer from the side. Fasten the scroll sides to the corner uprights using the 3/8 x 3/4 bolts. Next use the 5/16 x 3/4 bolts to attach the scrolls to the ends of the dryer with the bolts going to the outside (nuts on the outside) of the dryer.
- 6) Insert one half of the Top Collider Scroll Assembly into the Dryer and attach the sides of the scroll to the Dryer using two 3/8 x 3/4 bolts setting the distance between the Top and Bottom Collider Scrolls as suggested by the factory. Rotate the first Top Collider Scroll out of the way to give maximum clearance for installation of the second half of the Top Collider Scroll. Install the second half using the same method as the first. Rotate both pieces together and fasten together using the 5/16 x 3/4 bolts.
- 7) Install Center Uprights using the 5/16 x 3/4 bolts also leaving the nuts loose.
- 8) Install the Cap Assembly using the 5/16 x 3/4 bolts. Cap must be assembled so the adjustable panel on the top has the words "FLOW" and arrows going in the direction of cotton flow. See Drawing 14-4949B
- 9) Install the two Top Slides using the 5/16 x 3/4 bolts.
- 10) Tighten all bolts.
- 11) Install windows on the Mini-Collider Dryer. Rubber edging on the windows is sufficient for sealing.
- 12) Apply the included silicone caulking to the **OUTSIDE** of each seam. As the Mini-Collider Dryer gets hot during operation and operates under negative pressure, this caulking will be pulled into the seams when the Collider Dryer is first run forming a tight seal.
- 13) If the above instructions are not clear or additional information is required, please call us before you go further! Our phone numbers are 1-800-862-9966 or +1-806-795-5218.

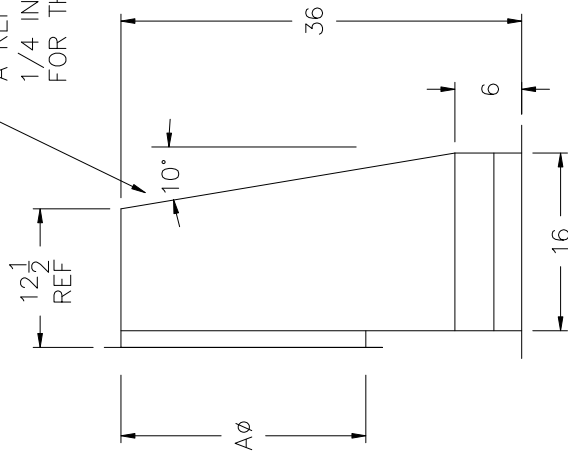
**81860A MINI-COLLIDER
DRYER ASSEMBLY**

**CAT5373B
3/08**

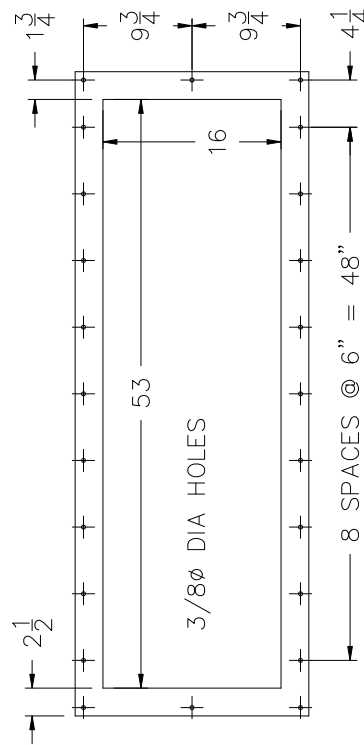
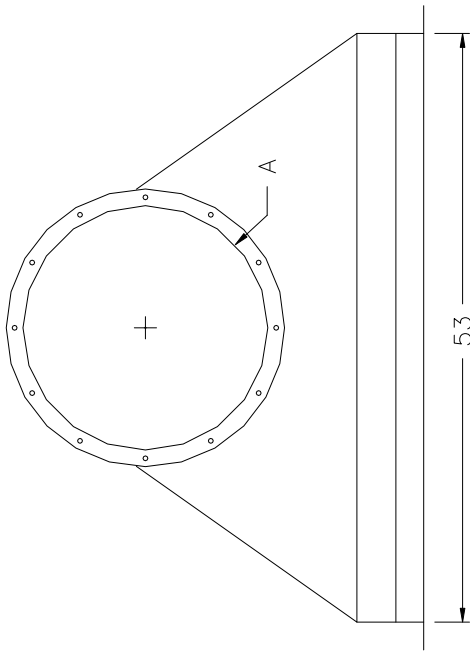


SEE DRAWING 14-4949B FOR MORE INSTALLATION DETAILS

IF MATERIAL IS ABRASIVE, USE
A REPLACEABLE SHEET OF
1/4 INCH "AR" PLATE
FOR THIS SPLATTER BACK SECTION



CONSULT FACTORY FOR DIAMETER 'A'



USE 2 1/2 X 2 1/2 X 3/16 ANGLE FOR 16 X 53 FRAME FLANGES

SAMUEL JACKSON, INC.

CUSTOM INLET
SPLATTER BACK TRANSITION

REF: 81860

DWN. BY: MLM

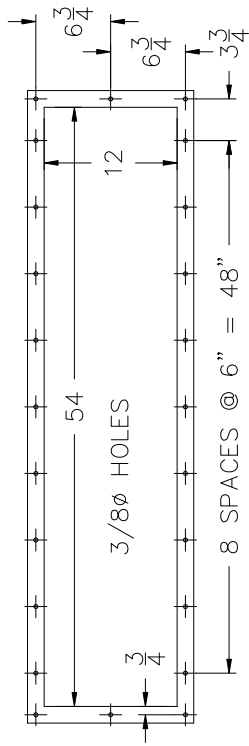
DRAWING NO.

14-5030

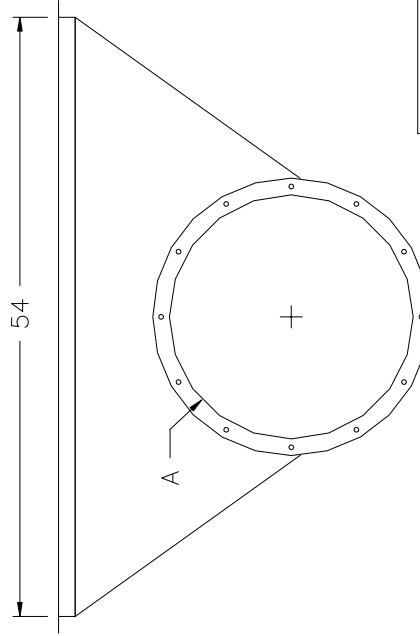
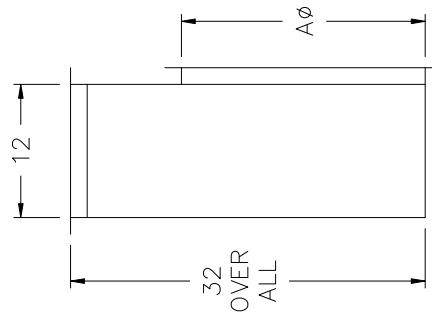
DATE 12-17-07

SCALE: 3/4" = 1' 0"

FOR:



USE 1 1/2 X 1 1/2 X 1/8 ANGLE FOR FLANGES



SAMUEL JACKSON, INC.

CUSTOM OUTLET
TRANSITION

REF: 81860A

DWN. BY: MLM
DRAWING NO.

DATE 2-12-08

14-4951B

CONSULT FACTORY FOR DIAMETER 'A'

SCALE: 3/4" = 1' 0"

FOR:

LIMITED WARRANTY

SAMUEL JACKSON, INCORPORATED

For Commercial and Industrial Customers of Samuel Jackson Moisture Control Products

SAMUEL JACKSON, INCORPORATED ("Sam Jackson") warrants to its customers who purchase Sam Jackson products that its equipment is free from defects in material and workmanship under normal use and service for 12 months from the date of shipment from its Lubbock, Texas factory.

THIS WARRANTY DOES NOT EXTEND TO EQUIPMENT SUBJECTED TO MISUSE, NEGLIGENCE, OR ACCIDENT; NOR DOES THIS WARRANTY APPLY UNLESS THE PRODUCT COVERED BY IT IS PROPERLY INSTALLED BY A QUALIFIED, COMPETENT TECHNICIAN, WHO IS LICENSED WHERE STATE AND LOCAL CODES REQUIRE, AND WHO IS EXPERIENCED IN MAKING SUCH INSTALLATIONS.

Equipment, which is defective in material or workmanship and within the warranty period, will be repaired or replaced, at Sam Jackson's option, in order to facilitate proper operation.

THIS WARRANTY IS LIMITED TO THE PRECISE TERMS SET FORTH ABOVE, AND PROVIDES EXCLUSIVE REMEDIES EXPRESSLY IN LIEU OF ALL OTHER REMEDIES, AND IN PARTICULAR THERE SHALL BE EXCLUDED THE IMPLIED WARRANTIES OF MERCHANTABILITY AND FITNESS FOR A PARTICULAR PURPOSE. IN NO EVENT WILL SAM JACKSON BE LIABLE FOR ANY INCIDENTAL OR CONSEQUENTIAL DAMAGE OF ANY NATURE.

Sam Jackson neither assumes nor authorizes any person to assume for Sam Jackson any other liability or obligation in connection with the sale of this equipment. Sam Jackson's liability and Customer's exclusive remedy being limited to repair or replacement as set forth above.

SAMUEL JACKSON, INCORPORATED
3900 Upland Avenue Lubbock, Texas 79407

This Page Intentionally Blank