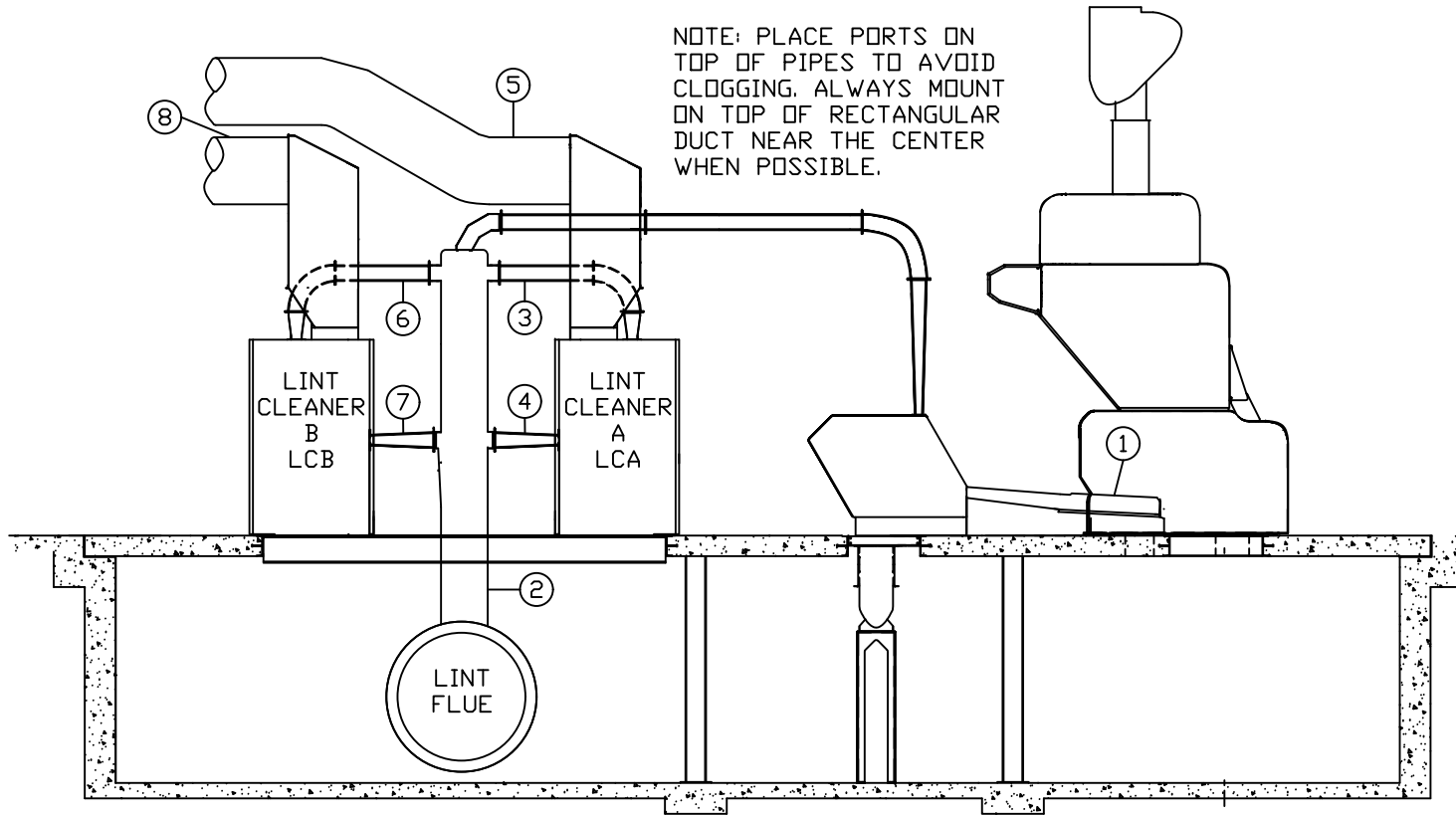


NOTE: PLACE PORTS ON TOP OF PIPES TO AVOID CLOGGING. ALWAYS MOUNT ON TOP OF RECTANGULAR DUCT NEAR THE CENTER WHEN POSSIBLE.



- 1 - GIN HOOD (WX0) PN# 26677A -5" to 5", GREEN
- 2 - LINT FLUE (WX2) PN# 26902 0-10" OR 0-15", YELLOW/BLACK
- 3 - LCA INLET (WX8) PN# 26677A -5" to 5", GREEN
- 4 - LCA OUTLET (WX9) PN# 26677A -5" to 5", GREEN
- 5 - LCA EXHAUST (WX10) PN# 26902 0-10" OR 0-15", YELLOW/BLACK
- 6 - LCB INLET (WX11) PN# 26677A -5" to 5", GREEN
- 7 - LCB OUTLET (WX12) PN# 26677A -5" to 5", GREEN
- 8 - LCB EXHAUST (WX13) PN# 26902 0-10" OR 0-15", YELLOW/BLACK

SAMUEL JACKSON, INC.	
MACH 1 AIR PORT PLACEMENT LUMMUS REF: 5842	
DWN. BY AH	DRAWING NO.
DATE 6/6/23	5841

SCALE: NA