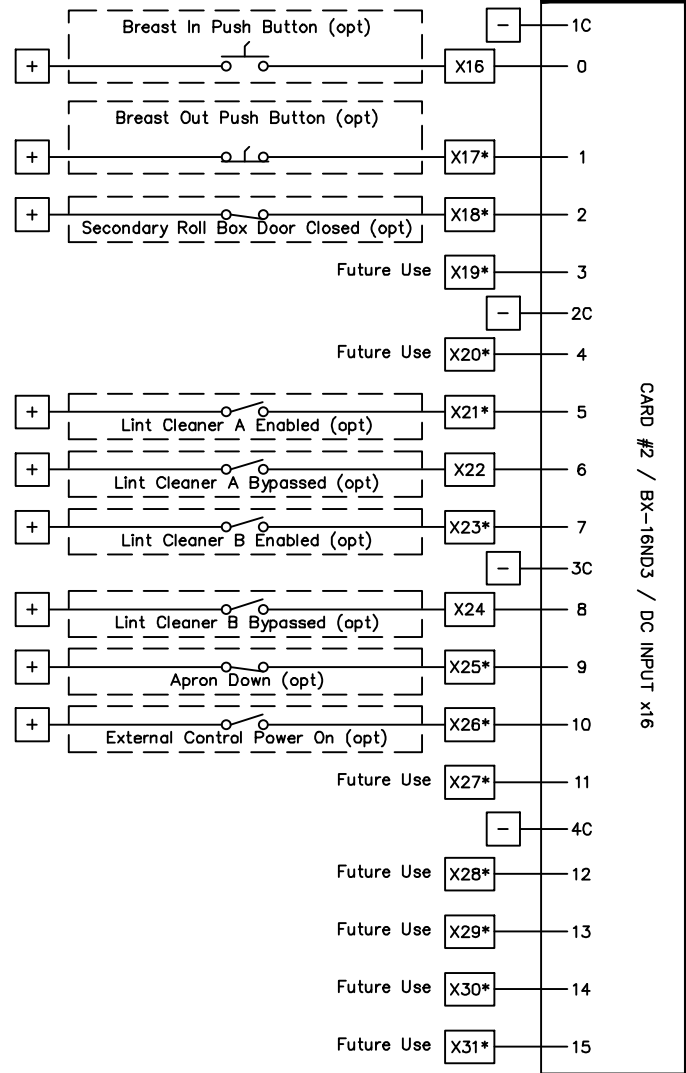
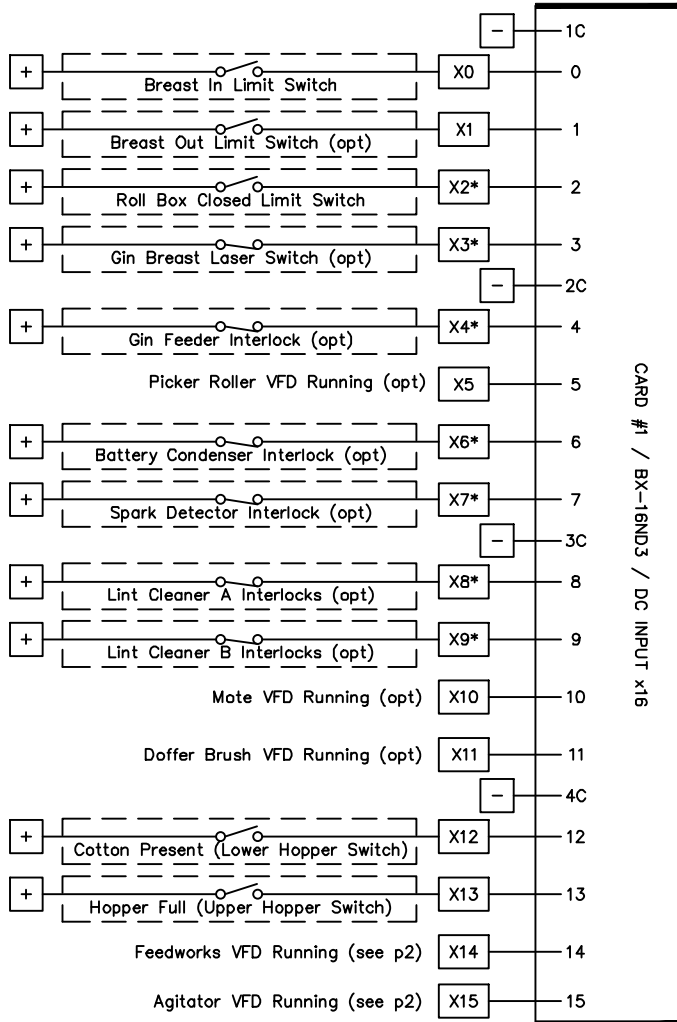
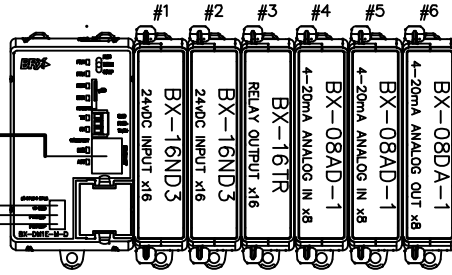
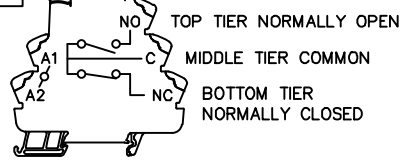
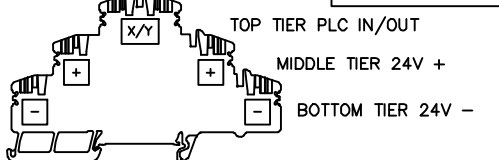


SJI NETWORK 2HP VFD 20HP VFD



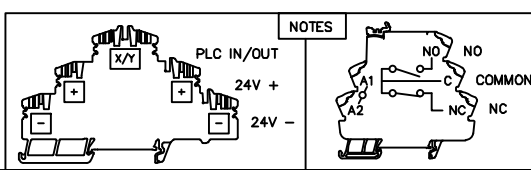
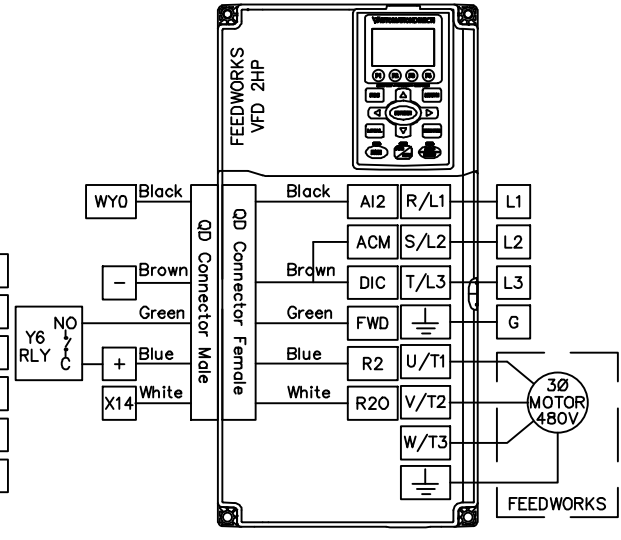
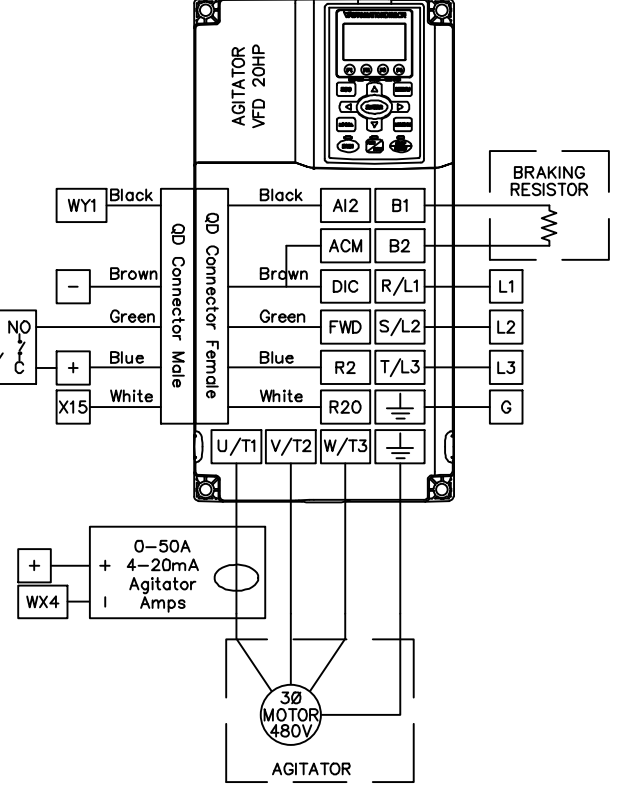
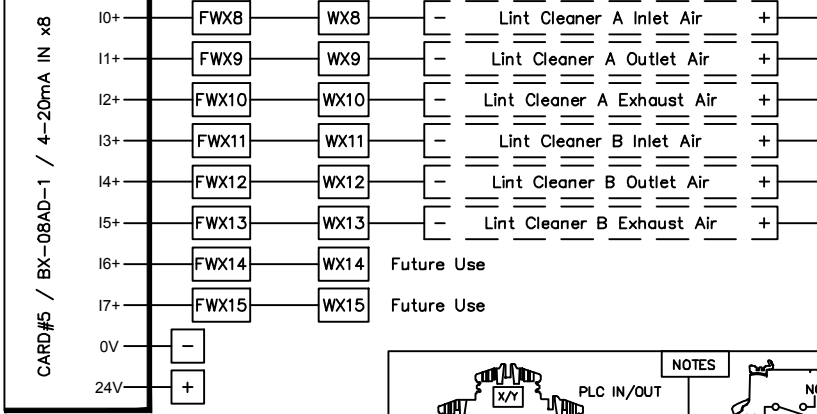
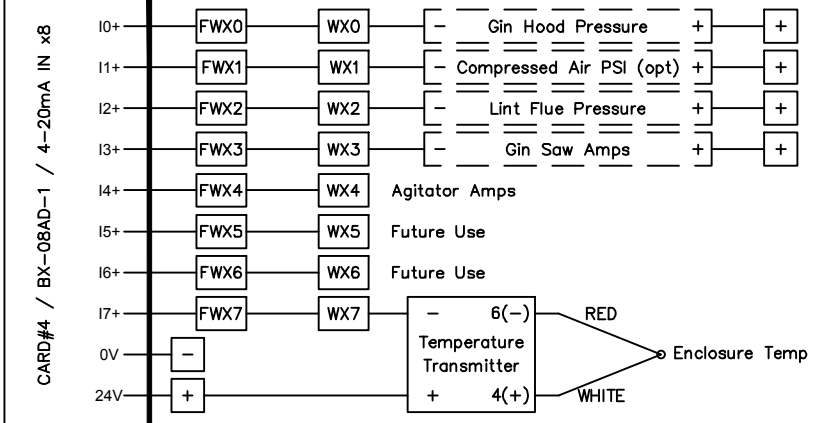
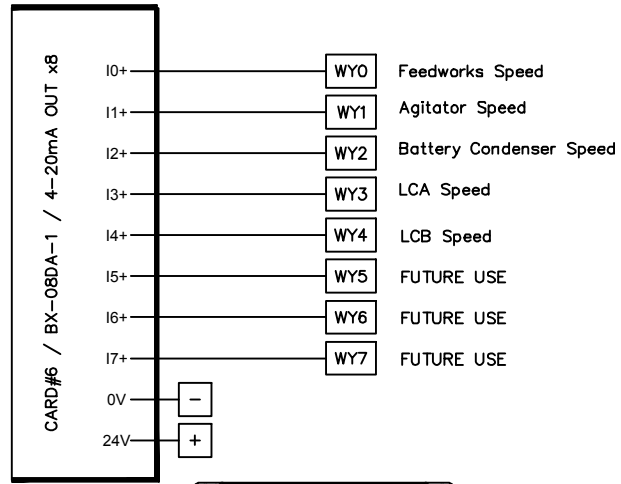
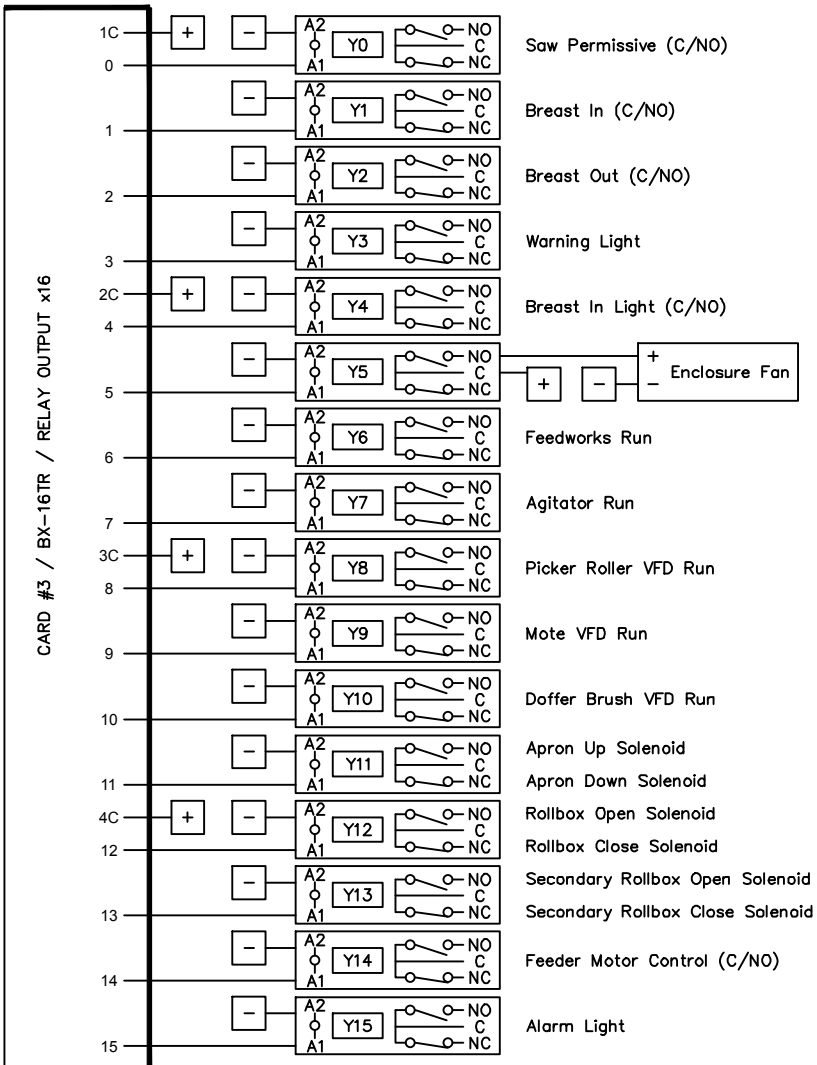
* Indicates terminal has factory jumper in place. Remove jumper when using terminal.

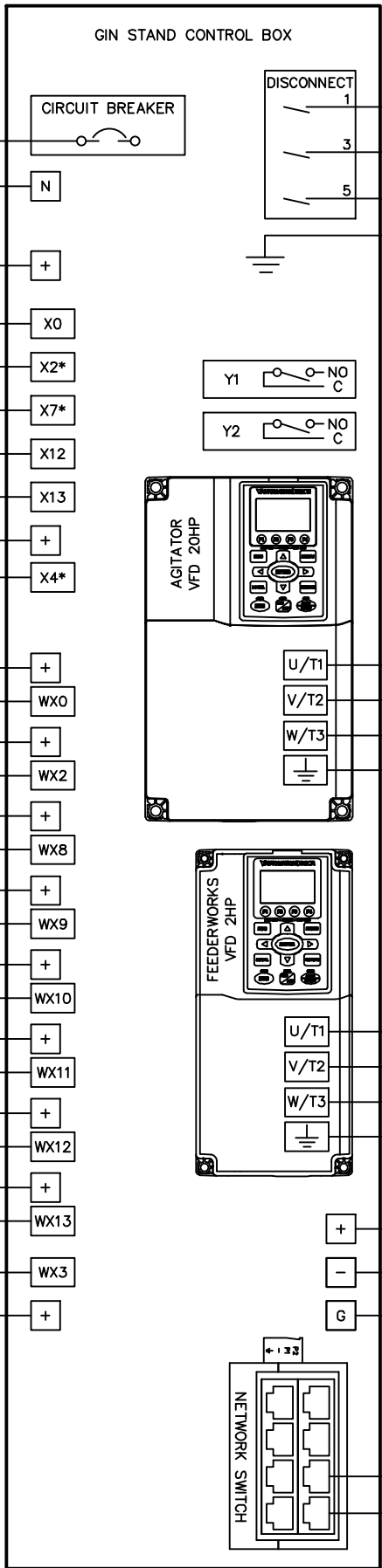
TERMINAL BLOCK NOTES



SAMUEL JACKSON, INC.
GIN STAND CONTROL
INTERNAL ELECTRICAL
SCHEMATIC
PAGE 1

CA220001E
06-2023





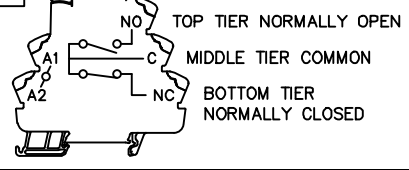
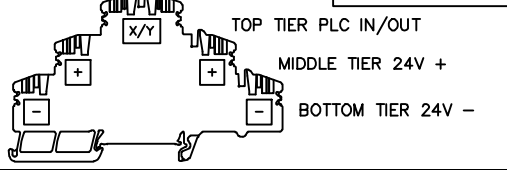
OPTIONAL
CONTROL POWER
SINGLE PHASE
120VAC / 60HZ

MAIN POWER
3-PHASE
480VAC
60 HZ

Breast In – Breast in when energized
Breast Out – Breast out when energized

* Indicates terminal has factory jumper in place.
Remove jumper when using terminal.

TERMINAL BLOCK NOTES



SAMUEL JACKSON, INC.
GIN STAND CONTROL
EXTERNAL CONNECTIONS

CA22002F
06-2023