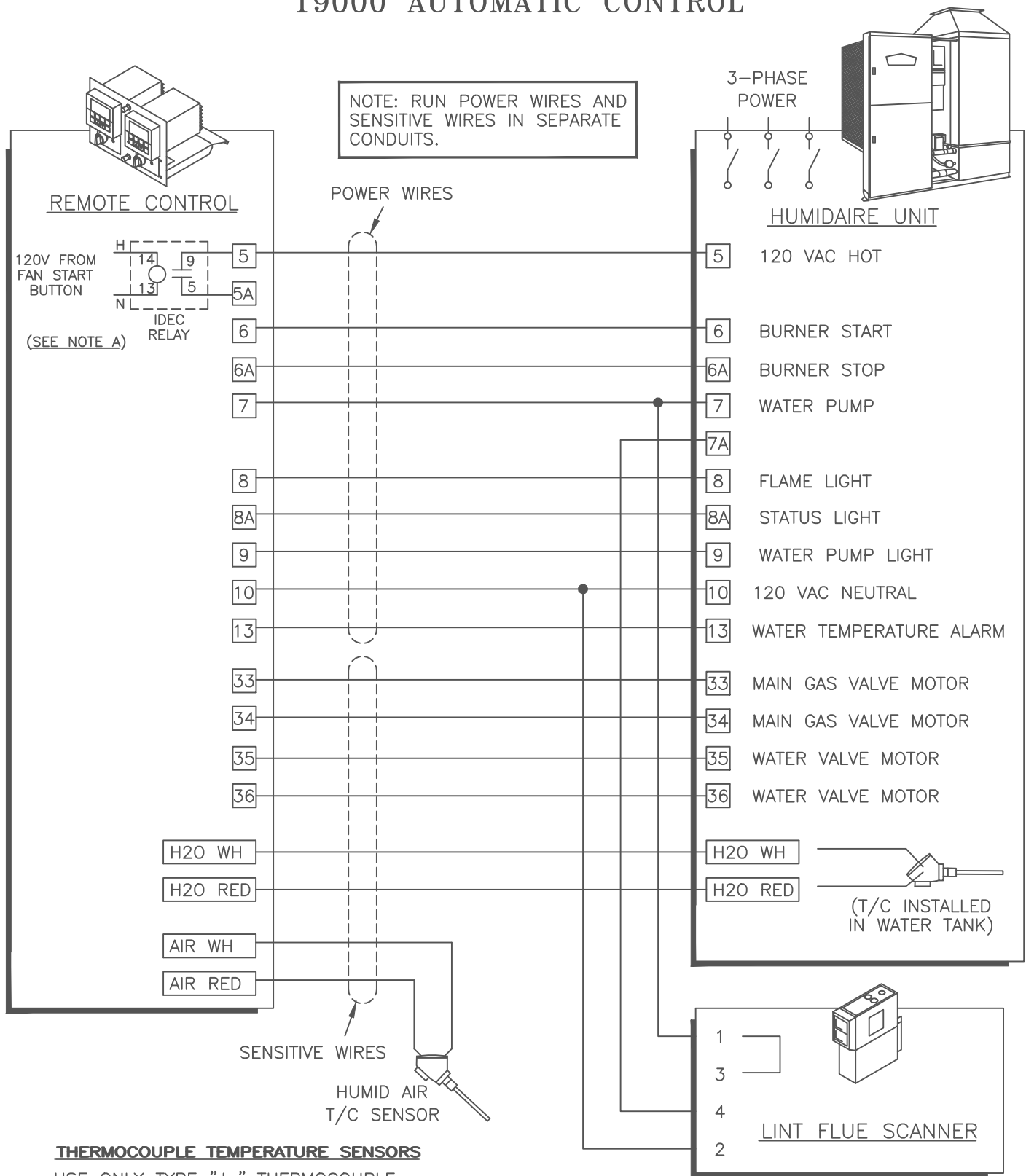


# EXTERNAL ELECTRICAL CONNECTIONS HU-60-1250 WITH 19000 AUTOMATIC CONTROL

CAT 2520  
10-95



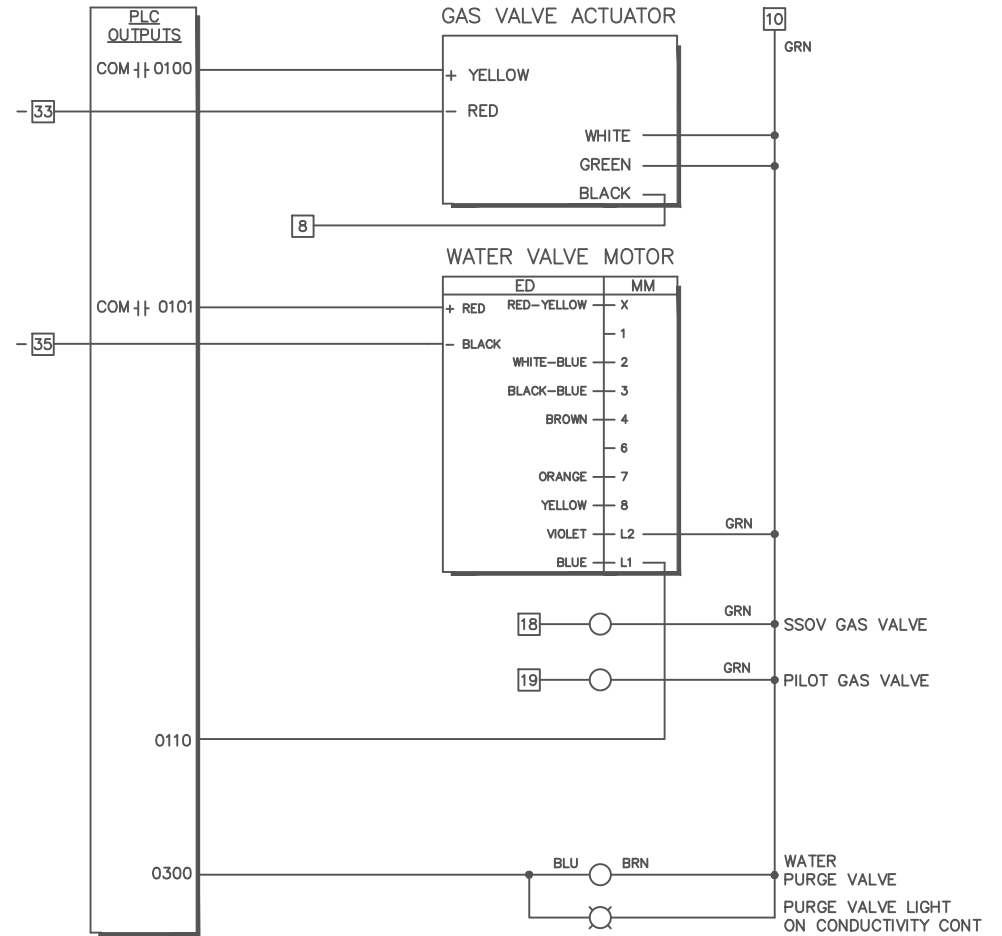
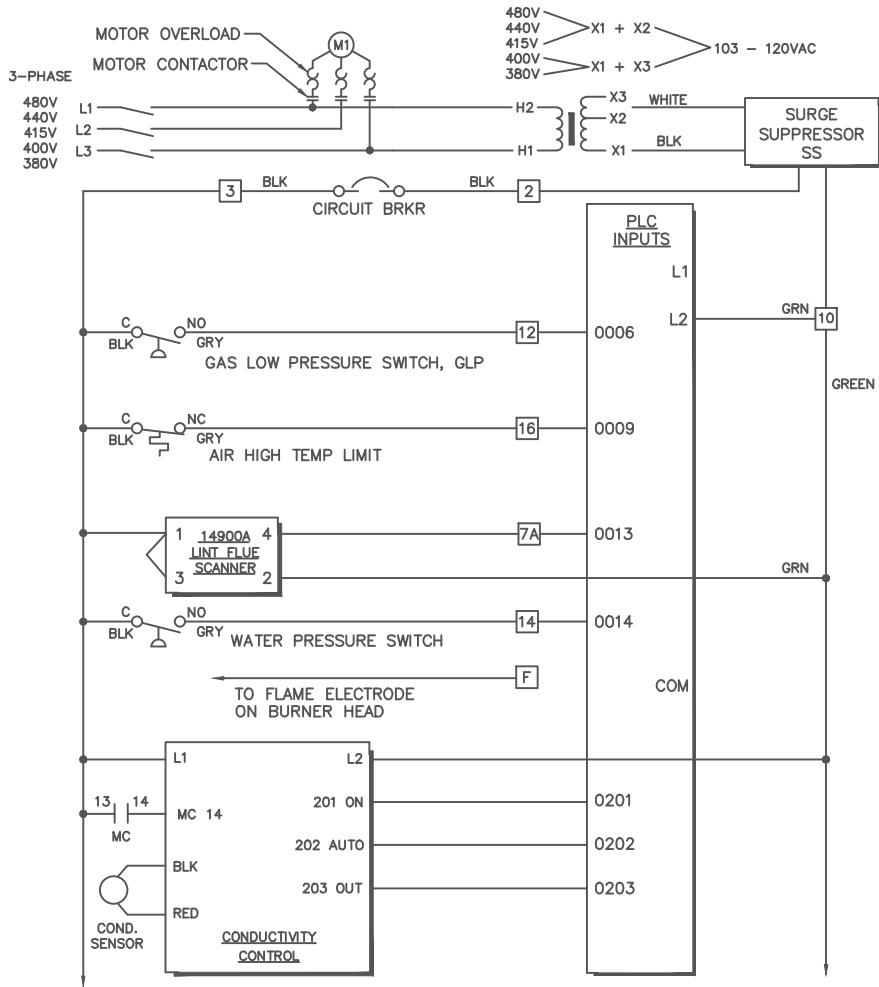
**THERMOCOUPLE TEMPERATURE SENSORS**

USE ONLY TYPE "J" THERMOCOUPLE EXTENSION WIRE FURNISHED WITH UNIT. OBSERVE THE COLOR CODE. RUN IN SEPARATE CONDUIT FROM POWER WIRES. SEVERAL T/C EXT. WIRES MAY BE RUN IN THE SAME CONDUIT.

**NOTE A:** INSTALLING ELECTRICIAN IS RESPONSIBLE FOR CONNECTION OF A NORMALLY OPEN INTERLOCK (FURNISHED) TO THE HUMID AIR FAN.

REMOTE CONTROL REQUIRES A RECTANGULAR MOUNTING CUTOUT 10 1/8 WIDE X 7 1/8 HIGH.

FOR BLUE UDC-3000 CONTROLS MAKE THE FOLLOWING TERMINAL SUBSTITUTIONS: 10 FOR 23, 11 FOR 24, 18 FOR 27, AND 1 FOR 3.



SAMUEL JACKSON, INC.

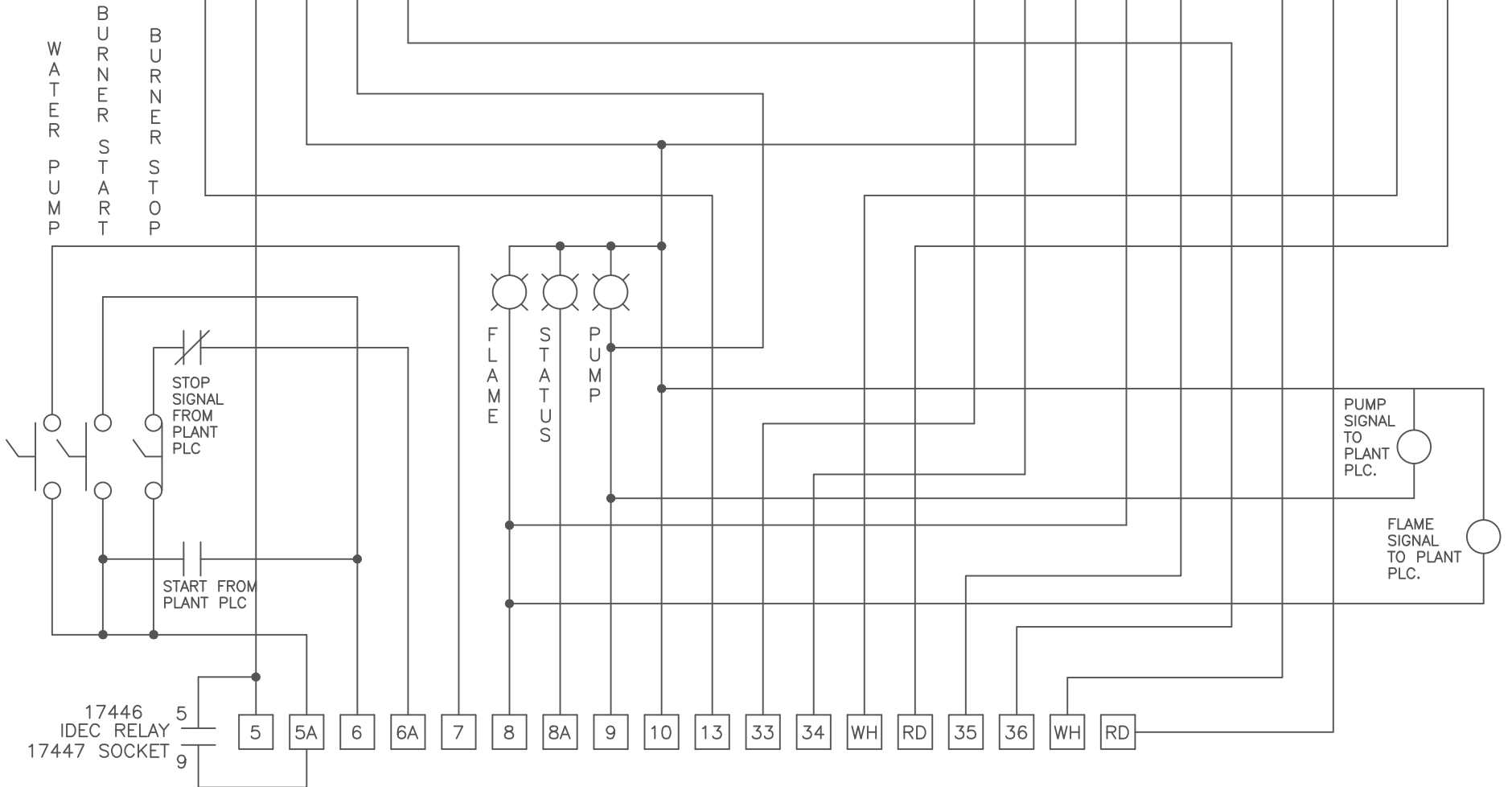
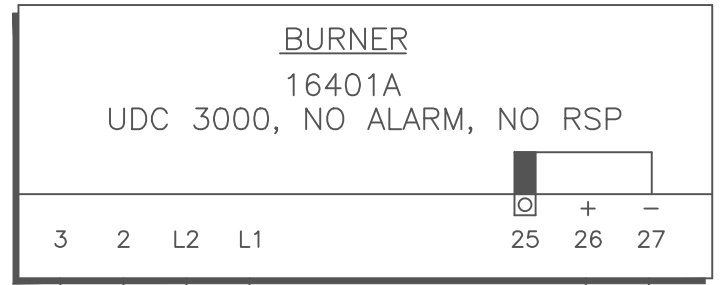
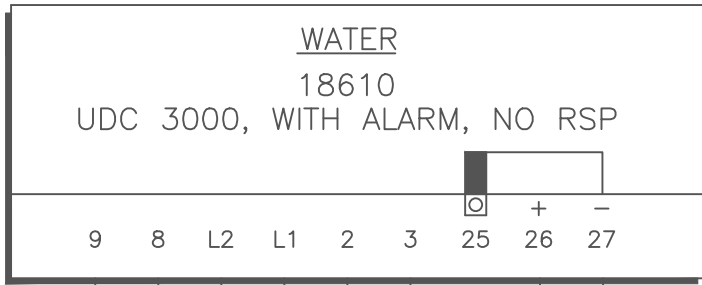
ELECTRICAL SCHEMATIC  
HU-60-1250  
HUMIDAIRE REBUILD

CAT2530B  
2-96

8-95

CAT 2390

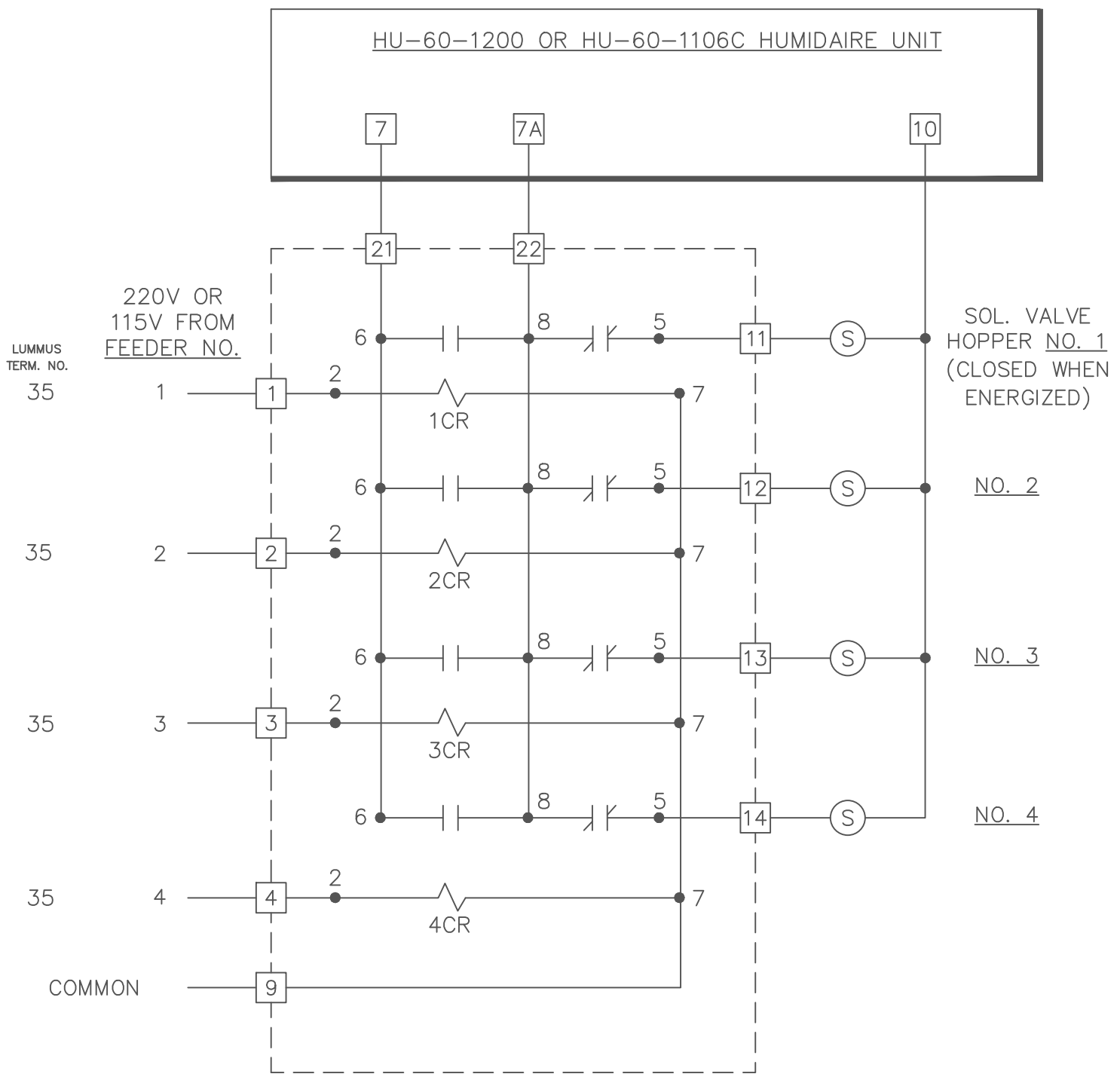
SAMUEL JACKSON, INC.  
19000 HUMIDAIRE REMOTE  
WIRING SCHEMATIC



# ELECTRICAL SCHEMATIC

## 13850 RELAY PANEL

### FOR JACKSON CONDITIONING HOPPERS



4 NO. 13146 RELAYS, KRP 11A 120 VAC.  
 USE 220V RELAYS FOR LUMMUS EXPORT.  
 SOLENOID VALVE COILS ARE ALWAYS  
 120 VAC. THEIR POWER COMES FROM  
 TERMINAL 7 OF THE HUMIDAIRE UNIT.

