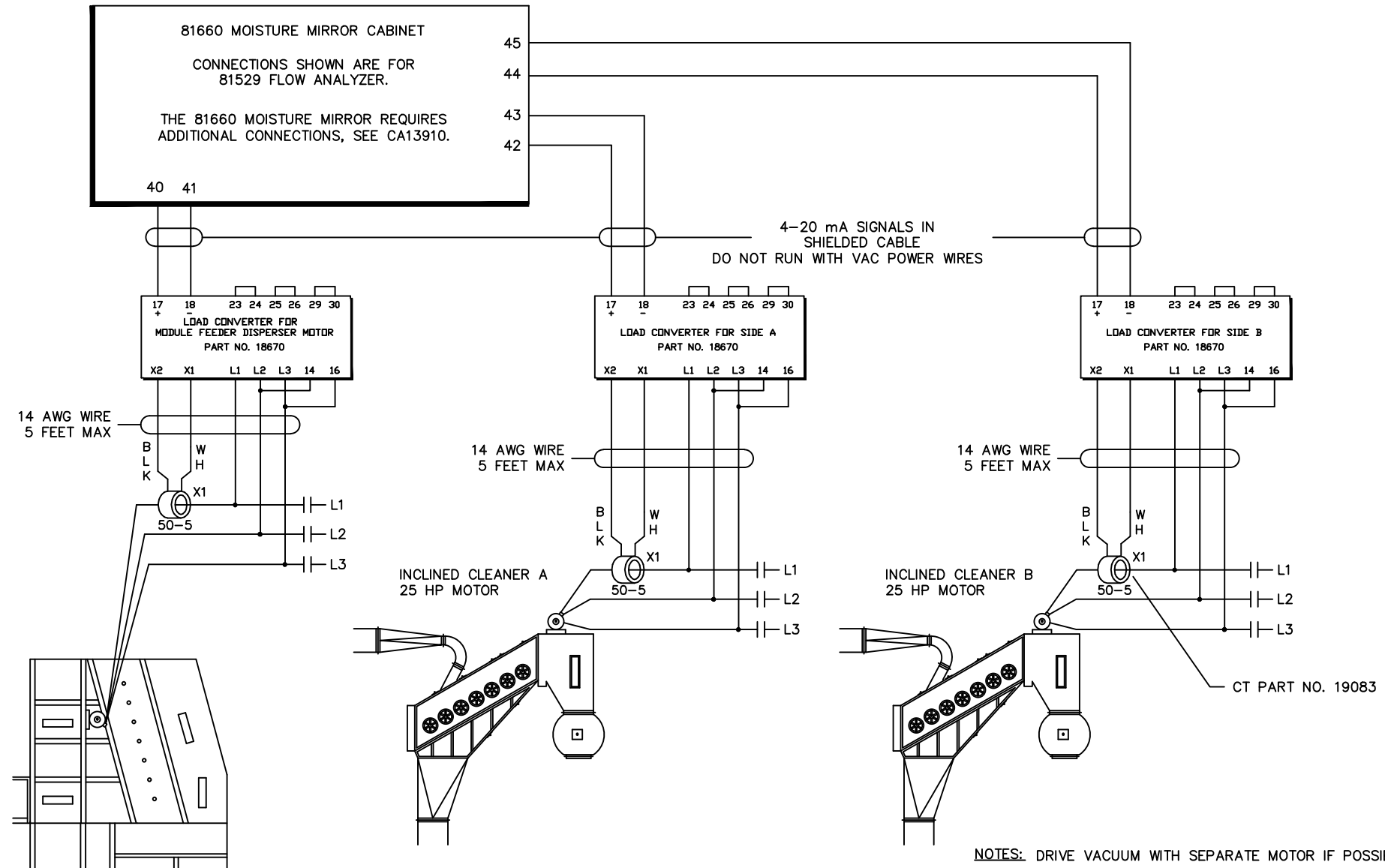


# EXTERNAL WIRING SCHEMATIC FOR 81529 FLOW ANALYZER

CA13962  
3-02



REFER TO SQUARE D LOAD CONVERTER  
INSTRUCTION SHEET FOR LOAD CONVERTER  
TERMINALS (28-32) JUMPER SETTINGS AND CT  
PRIMARY TURNS FOR MOTORS OTHER THAN 25 HP.

NOTES: DRIVE VACUUM WITH SEPARATE MOTOR IF POSSIBLE.  
LOCATE LOAD CONVERTERS AND CURRENT TRANSFORMERS (CT)  
IN OR NEAR MOTOR CONTROL CENTER.  
OBSERVE DIRECTION L1 GOES THROUGH CT.  
\*\*\* NEVER OPERATE A MOTOR WITHOUT SHORTING TOGETHER  
THE LEADS OF ITS CT, OR CONNECTING SECURELY TO  
TERMINALS X1 AND X2 OF THE LOAD CONVERTER.