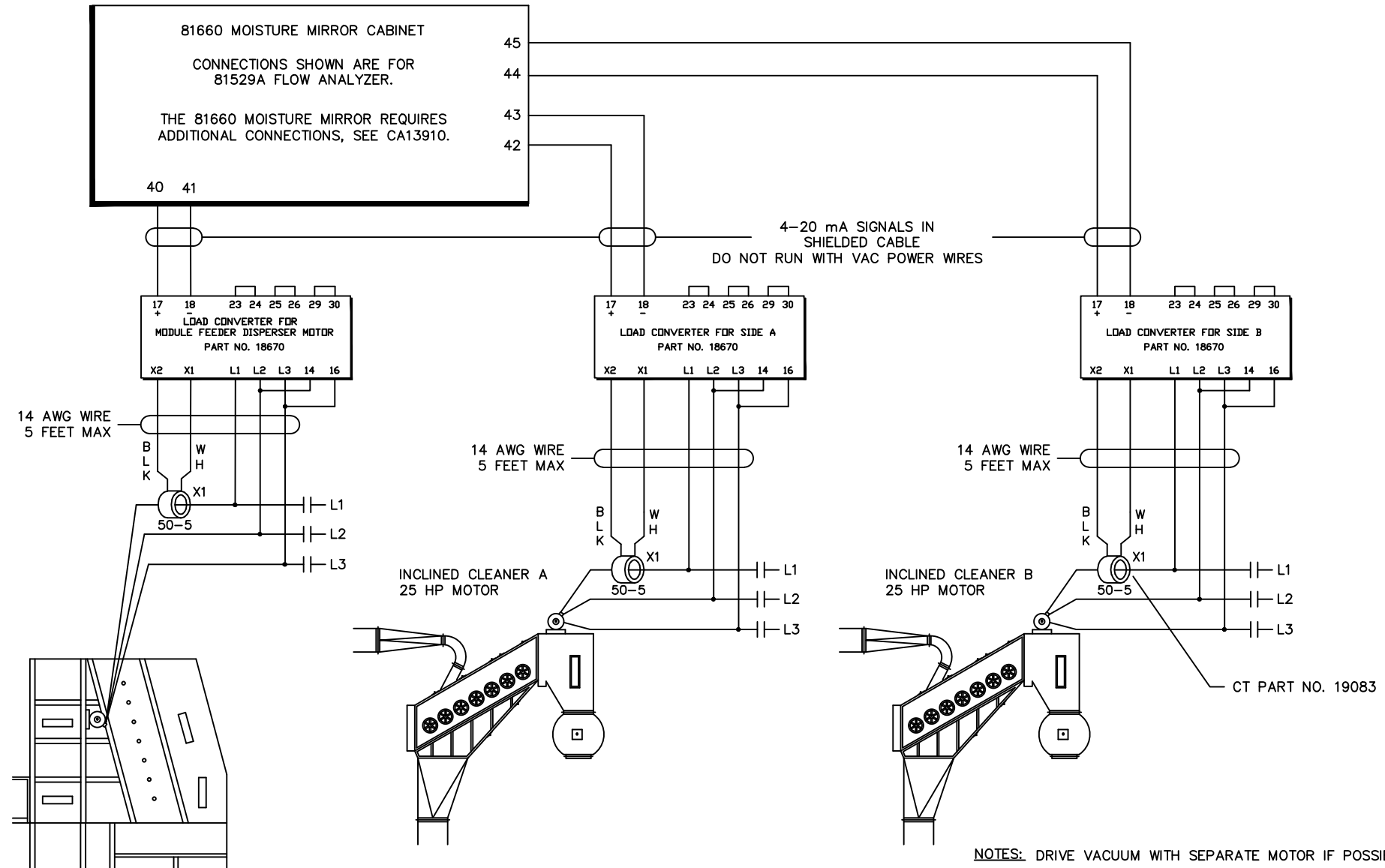


EXTERNAL WIRING SCHEMATIC FOR 81529A FLOW ANALYZER

CA13962A
4-02



REFER TO SQUARE D LOAD CONVERTER
INSTRUCTION SHEET FOR LOAD CONVERTER
TERMINALS (28-32) JUMPER SETTINGS AND CT
PRIMARY TURNS FOR MOTORS OTHER THAN 25 HP.

NOTES: DRIVE VACUUM WITH SEPARATE MOTOR IF POSSIBLE.
LOCATE LOAD CONVERTERS AND CURRENT TRANSFORMERS (CT)
IN OR NEAR MOTOR CONTROL CENTER.
OBSERVE DIRECTION L1 GOES THROUGH CT.
*** NEVER OPERATE A MOTOR WITHOUT SHORTING TOGETHER
THE LEADS OF ITS CT, OR CONNECTING SECURELY TO
TERMINALS X1 AND X2 OF THE LOAD CONVERTER.