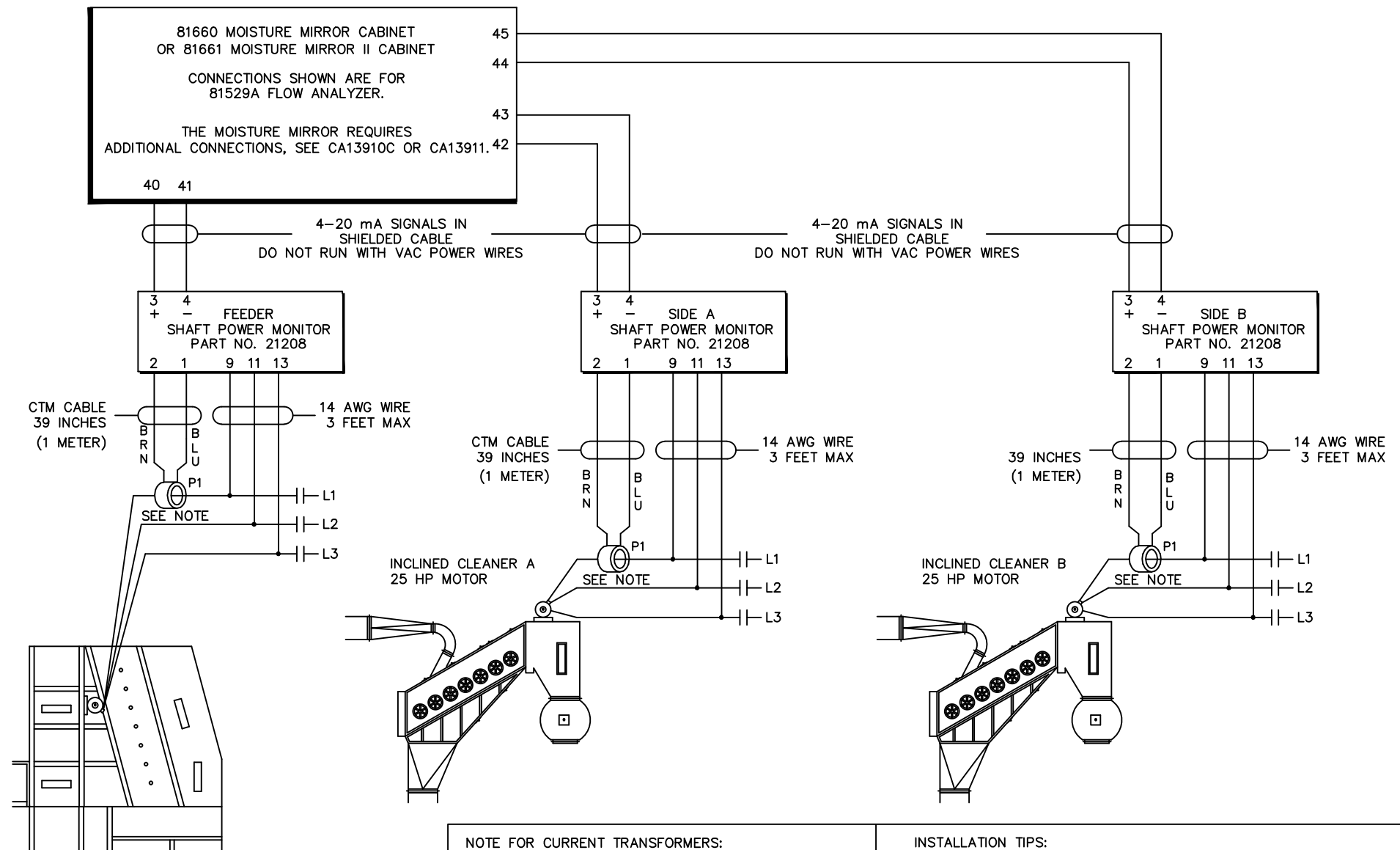


# EXTERNAL WIRING SCHEMATIC FOR 81529A FLOW ANALYZER

CA13962C  
7-03



NOTE FOR CURRENT TRANSFORMERS:  
PART NO. 21211 (CTM 050) USED FOR 25 HP MOTOR.  
REFER TO MOISTURE MIRROR MANUAL  
FOR MOTORS WITH RATED MOTOR AMPS  
LESS THAN 26 AMPS OR GREATER THAN 50 AMPS

INSTALLATION TIPS:  
DRIVE VACUUM WITH SEPARATE MOTOR IF POSSIBLE.  
LOCATE LOAD CONVERTERS AND CURRENT TRANSFORMERS (CMT)  
IN OR NEAR MOTOR CONTROL CENTER.  
  
\*\*\* NEVER OPERATE A MOTOR WITHOUT SHORTING TOGETHER  
THE LEADS OF ITS CURRENT TRANSFORMER, OR CONNECTING SECURELY TO  
TERMINALS 1 AND 2 OF THE SHAFT LOAD MONITOR.